

## JMB Spring Return Guide Post: Surface Mount Plate - Installation Instructions

The JMB BP420 Surface Mount Plate is designed for installing generally on flat asphalt or concrete.

### 1) Safety

Always use traffic control appropriate to the location to make the work area safe for installation

### 2) Prepare the Site

Use a stiff broom or similar to remove sand, gravel and other debris off the installation surface.

Follow any local authority guidelines for positioning the guide post, post or delineator blade

### 3) Positioning the Base Plate

Position the Base Plate aligning the traffic flow arrow with the actual traffic flow. *(This positions the "Turn and Lock" connection system in the correct orientation.)*

Refer Figure 1



## JMB Spring Return Guide Post: Surface Mount Plate - Installation Instructions cont.

### 4) Bolting Down the Base Plate

Mark or direct drill the hole positions using the base plate as a drilling guide

Anchor BP420 base plates by using either a Sleeved Masonry Anchor or Screw In Masonry Anchor  
*Refer to Figure 2 for Anchor Options*

Fixing holes can be drilled from the top. *Refer to Figure 2 for drilling details*

Prior to drilling JMB advises that you mark on the drill the appropriate depth. (*I.e. height of the base (10mm) + required engagement depth to suit the fastener*) This ensures the holes are drilled to the correct depth.

Once drilling is complete clean the hole and insert the masonry anchor into the hole. Tap down into place with a hammer if necessary. (*Sleeved anchors only*)

Tighten the anchor to the recommended torque. Refer Figure 2

**NOTE: Information given for masonry anchors is included as a guide only. Manufactures specifications should always override this information.**

**Figure 2**

**General Information Sleeved Anchors**

**Option1:** Ø 10 x 50 (M8 thread) DynaBolt

Drill Hole - Ø10mm x 55mm

Tightening Torque – 35Nm

**Option2:** Ø 12 x 60 (M10 thread) DynaBolt

Drill Hole - Ø12mm x 70mm

Tightening Torque – 55Nm

**General Information Screw In Anchors**

**Option 1:** M8 x 60

Drill Hole – Ø8mm x 75mm

Tightening Torque – 40Nm

**Option 2:** M10 x 60

Drill Hole - Ø10mm x 80mm

Tightening Torque – 60Nm

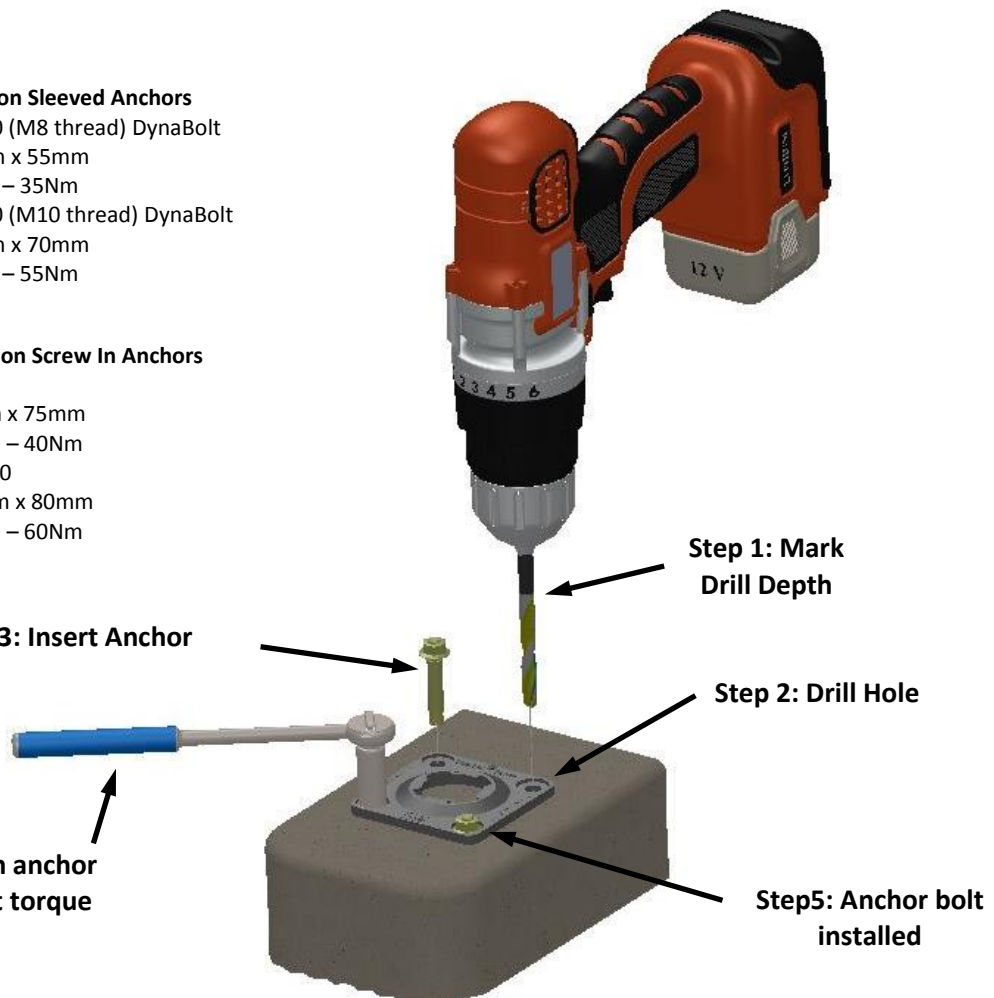
**Step 3: Insert Anchor**

**Step 4: Tighten anchor bolt to correct torque**

**Step 1: Mark Drill Depth**

**Step 2: Drill Hole**

**Step5: Anchor bolt installed**



## JMB Spring Return Guide Post: Surface Mount Plate - Installation Instructions cont.

### 5) Installing the Turn and Lock Post

Once the Base Plate is secured the Posts are secured to the Base Plate using JMB's simple "Turn and Lock" system. Both Installation and replacement of posts only takes seconds.

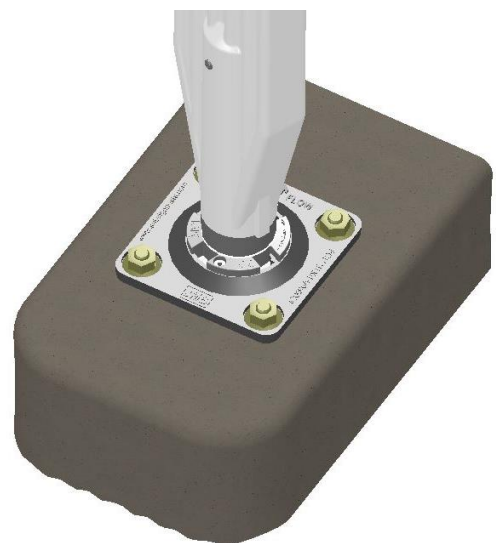
The "Turn and Lock" system is keyed to ensure the correct post orientation. A locking screw or pin can be used to prevent accidental disconnection. Refer to the following Figures 3 to 6 below.

**Figure 3: Step 1**



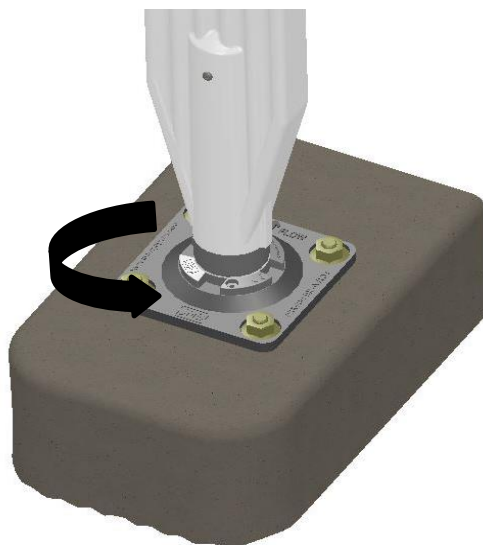
Position the Post above the base plate aligning the locating peg

**Figure 4: Step 2**



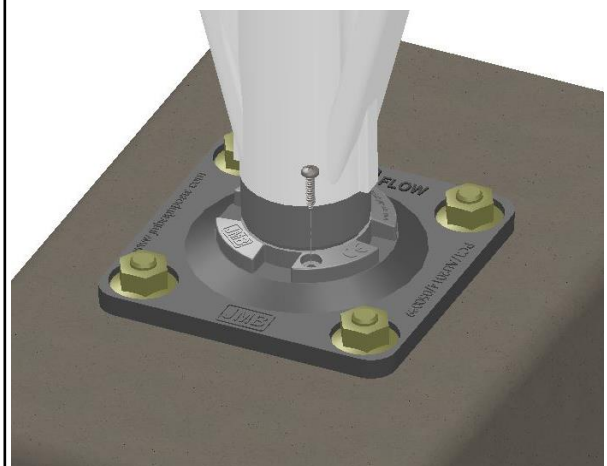
Insert Post into the hole

**Figure 5: Step 3**



Turn the post and lock.

**Figure 6: Step 4**



Fit a locking Screw or Pin  
Screw: Pan Head 6g x 16mm or 7g x 16mm  
Pin: 3mmOD x 12mm (minimum)

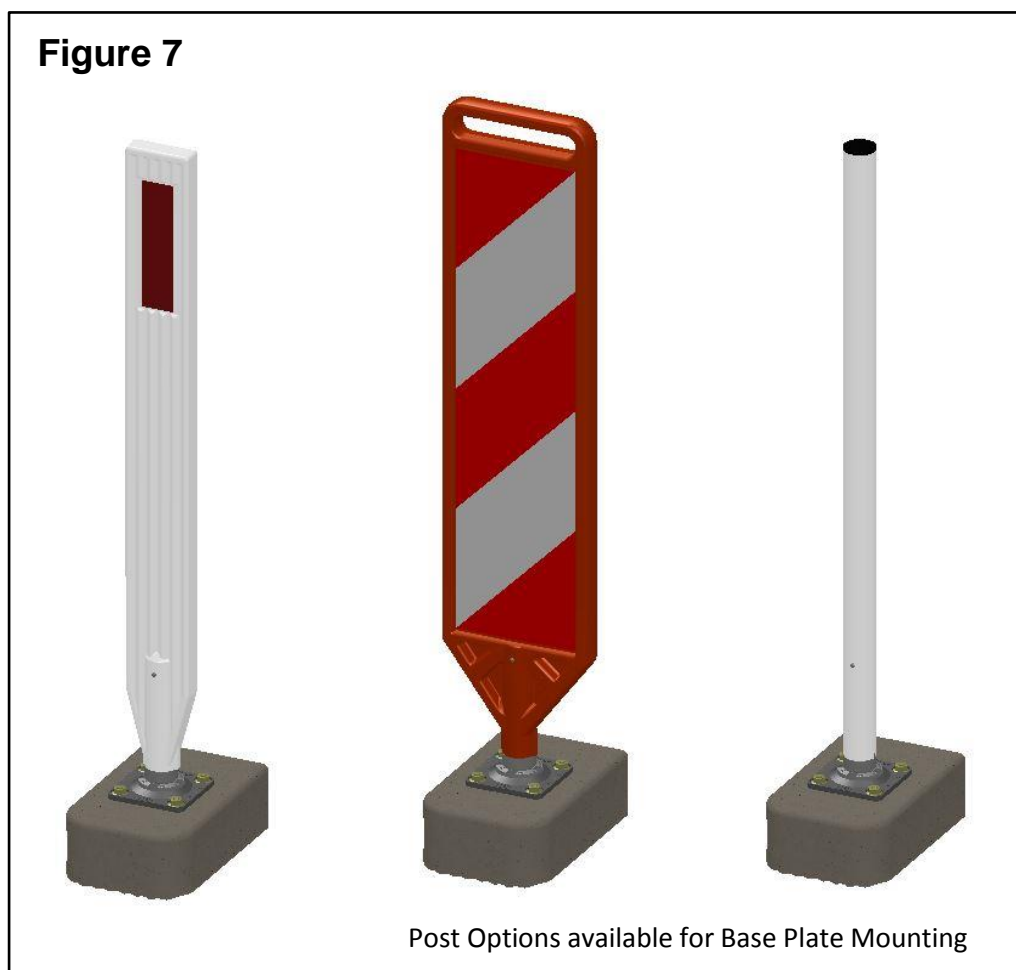
## JMB Spring Return Guide Post: Surface Mount Plate - Installation Instructions cont.

### 6) Completed Installation

The BP420 Base Plate can be used with any Post element that is fitted with the G2100201 “Turn and Lock” Base Unit. Refer Figure 7

Once Installed each Spring Return Delineator Blade or Post is passive safe and features full 360° impact recovery.

Post removal or replacement takes only seconds



### REFERENCE INFORMATION:

General Installation and Dimensional information can also be found in the “Generation 2 Products – Technical Information”. Available for download off the JMB website downloads page.